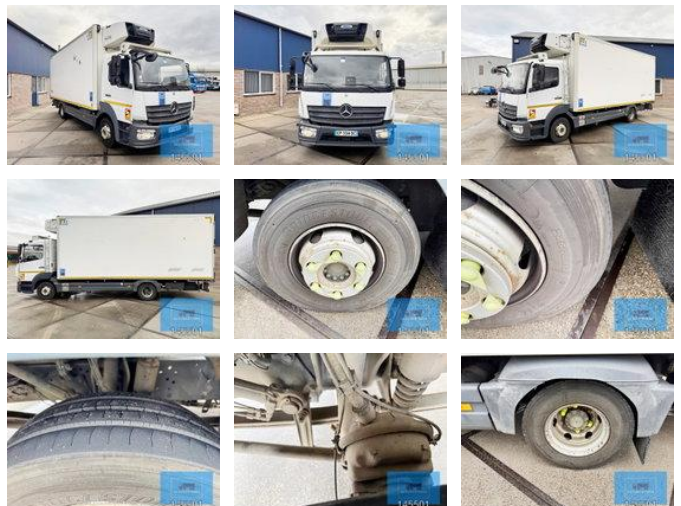




Mercedes-Benz Atego 1221 MEAT ROHRBAHNEN CARRIER SUPRA FRC 07-2017

General characteristics

Brand	Mercedes-Benz
Model	Atego 1221
Subcategory	Refrigerated
Meter reading	278.000km
Year of construction	2017
Date of first registration	12-07-2017
Colour	Wit
Condition	Used
General state	Very good
Fuel	Diesel
Emission class	Euro 6
Reference	145501B



Properties

Single weight	7.945kg
Load capacity	3.945kg

GVW	11.990kg
Length	830cm
Width	250cm
Cabin	Nee
Serial number	WDB96702810145501
Cylinder capacity	5.132cc

Mercedes-Benz Atego 1221 MEAT ROHRBAHNEN CARRIER SUPRA FRC 07-2017

Technical specifications

Number of axes	2
Axis configuration	4x2
Transmission	Automatic
Assets	210hp

Description

Mercedes-Benz Atego 1221 4x2 Refrigerated Truck – Carrier Supra 750 – Euro 6 General • Make / Model: Mercedes-Benz Atego 1221 • Configuration: 4x2 refrigerated truck • First registration: 12-07-2017 • Mileage: 278,000 km • Colour: Original white • Chassis number (VIN): WDB96702810145501 Engine & Drivetrain • Engine output: 210 HP • Emission standard: Euro 6 OBD-C • Engine type: OM934, 4-cylinder • Gearbox: Automatic Powershift 3 • Type: G 90-6 (ratios 6.70 – 0.73) Cab & Chassis • Cab: ClassicSpace S-cab • Version: Day cab • Engine tunnel: 230 mm • Wheelbase: 422 cm Refrigerated Body • Refrigeration unit: Carrier Supra 750 D/E • FRC certificate valid until: 06/2026 • Insulated box dimensions (L x W x H): 610 x 235 x 235 cm • Rear doors • Meat hanging system

Accessories

- Anti-lock braking system
- Central locking
- Central lubrication
- Cruise control
- Twin fuel tank
- Electrically operated windows
- Low-noise
- Air horn
- Air suspension
- Fog lights
- Spare wheel
- Particulate filter
- Speed limiter
- Spotlights
- Catalyst
- Parkassist
- Power steering
- Passenger seat
- Airbags
- Radio/Cd/Audio system
- Central doorlocking
- Electric windows
- Climate control
- Heater

- ASR (Anti-Slip Regulation/Traction Control)
- Short cabin