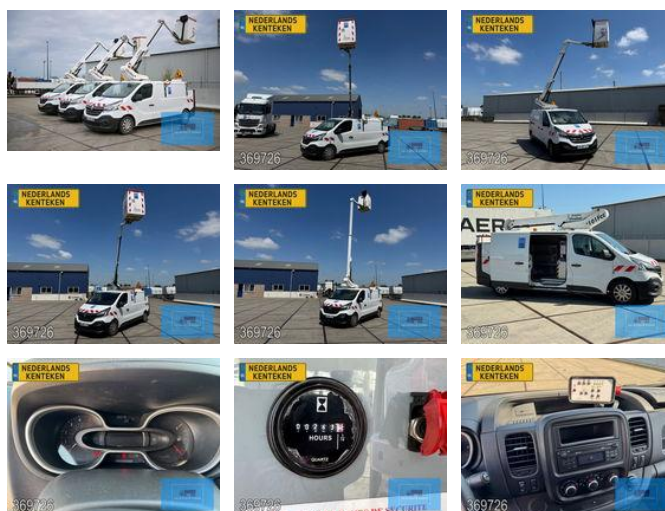




## Renault Trafic DCI 101FCC FRANCE ELEVATEUR 66.000 KM 263 HRS 07-2022 EURO 6 NACELLE

### General features

Brand	Renault
Model	Trafic
Subcategory	Work platform
Licence plate	V29NHF
Odometer reading	66.000km
Construction year	2022
Date of first registration	08-07-2022
Hourmeter reading	263
Color	White
Condition	Used
General condition	Very good
Fuel	Diesel
Emission class	Euro 6
Reference	369726C
CE marking	Yes



### Characteristics

Empty weight	2.445kg
Load capacity	605kg

GVW	3.050kg
Width	196cm
Serial number	VF1FL000068369726
Lifting capacity	120kg
Lifting height	10.000mm
Cylinder contents	1.997cc
Mast type	Articulated

# Renault Trafic DCI 101FCC FRANCE ELEVATEUR 66.000 KM 263 HRS 07-2022 EURO 6 NACELLE

## Technical specifications

Engine output

107kw

## Description

### \*\*Renault Trafic F 1200 L1H1 DCI 145 with Aerial Work Platform\*\* Are you looking for a reliable commercial vehicle with an aerial work platform for your tasks in urban environments or industrial applications? This Renault Trafic, equipped with an aerial work platform, offers the perfect solution for all your needs. It is ideal for tasks such as lighting maintenance, overhead line work, or other high-altitude installations. --- ### \*\*Key Features:\*\* - \*\*Make/Model:\*\* Renault Trafic F 1200 L1H1 DCI 145 - \*\*Year of Manufacture:\*\* 08-07-2022 - \*\*Mileage:\*\* 66.000 km - \*\*Fuel Type:\*\* Diesel (Gazole) - \*\*Engine:\*\* In good condition, complies with Euro 6 emission standards - \*\*Transmission:\*\* Manual gearbox - \*\*Steel boom:\*\* France Elevateur 110Fcc - \*\*Maximum Working Height:\*\* 10 meters - \*\*Maximum Basket Load Capacity:\*\* 120 kg - \*\*Arm Rotation Range:\*\* 400° - \*\*Basket Dimensions (L/W/H):\*\* 850 x 780 x 1150 mm - \*\*Maximum Outreach Without Support:\*\* 6.30 meters --- ### \*\*Technical Specifications:\*\* - \*\*GVW (Gross Vehicle Weight):\*\* 2,900 kg - \*\*Payload Capacity:\*\* 410 kg - \*\*Number of Seats:\*\* 2 - \*\*Number of Doors:\*\* 2 - \*\*Color:\*\* White --- ### \*\*Additional Equipment and Options:\*\* - \*\*Aerial Work Platform:\*\* In good condition, electro-hydraulic operation with a fiberglass basket (1000V insulation). - \*\*Safety Features:\*\* Mechanical emergency pump, transport position indicator light, and safety harnesses. - \*\*Comfort Features:\*\* Air conditioning included. --- ### \*\*Vehicle Condition:\*\* - \*\*Overall:\*\* The vehicle is in good technical condition and fully operational. - \*\*Remarks:\*\* - Aerial Work Platform: Functions properly. - Tire Wear: Less than 50%. - Minor signs of use. This Renault Trafic is a versatile and practical choice for professionals who need a reliable vehicle with an aerial work platform for various applications.

## Accessories

- Anti-lock braking system
- Air conditioning
- Central locking
- Central lubrication
- Cruise control
- Electrically operated windows
- Low-noise
- Toolbox
- Radio/CD player
- Particulate filter
- Spotlights
- Side door
- Catalyst
- Trailer coupling
- Power steering
- Passenger seat
- Airbags
- Central doorlocking
- Electric windows
- EBS
- Heater

- ASR (Anti-Slip Regulation/Traction Control)