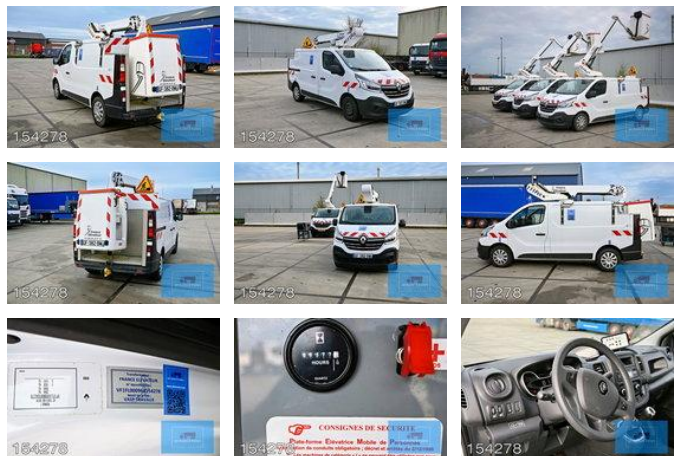




## Renault Trafic DCI 111FCC FRANCE ELEVATEUR 66.000 KM 03-2022 377 HRS EURO 6 NACELLE

### General features

|                            |               |
|----------------------------|---------------|
| Brand                      | Renault       |
| Model                      | Trafic        |
| Subcategory                | Work platform |
| Odometer reading           | 66.000km      |
| Construction year          | 2022          |
| Date of first registration | 08-03-2022    |
| Color                      | White         |
| Condition                  | Used          |
| General condition          | Very good     |
| Fuel                       | Diesel        |
| Emission class             | Euro 6        |
| Reference                  | 154278L       |
| CE marking                 | Yes           |



### Characteristics

|               |         |
|---------------|---------|
| Empty weight  | 2.485kg |
| Load capacity | 470kg   |
| GVW           | 2.955kg |
| Width         | 196cm   |

|                   |                   |
|-------------------|-------------------|
| Serial number     | VF1FL000968154278 |
| Lifting capacity  | 120kg             |
| Lifting height    | 10.600mm          |
| Cylinder contents | 1.997cc           |
| Mast type         | Articulated       |

# Renault Trafic DCI 111FCC FRANCE ELEVATEUR 66.000 KM 03-2022 377 HRS EURO 6 NACELLE

## Technical specifications

Engine output

107kw

## Description

### **Renault Trafic F 1000 L1H1 DCI 145 with Aerial Work Platform** Are you looking for a reliable commercial vehicle with an aerial work platform for your tasks in urban environments or industrial applications? This Renault Trafic, equipped with an aerial work platform, offers the perfect solution for all your needs. It is ideal for tasks such as lighting maintenance, overhead line work, or other high-altitude installations. --- ### **Key Features:** - **Make/Model:** Renault Trafic F 1000 L1H1 DCI 145 - **Year of Manufacture:** 08-03-2022 - **Mileage:** 66,000 km - **Fuel Type:** Diesel (Gazole) - **Engine:** In good condition, complies with Euro 6 emission standards - **Transmission:** Manual gearbox - **Maximum Working Height:** 11 meters - **Maximum Basket Load Capacity:** 120 kg - **Arm Rotation Range:** 400° - **Basket Dimensions (L/W/H):** 850 x 780 x 1150 mm - **Maximum Outreach Without Support:** 6.50 meters --- ### **Technical Specifications:** - **GVW (Gross Vehicle Weight):** 2,900 kg - **Payload Capacity:** 410 kg - **Number of Seats:** 2 - **Number of Doors:** 2 - **Color:** White --- ### **Additional Equipment and Options:** - **Aerial Work Platform:** In good condition, electro-hydraulic operation with a fiberglass basket (1000V insulation). - **Safety Features:** Mechanical emergency pump, transport position indicator light, and safety harnesses. - **Comfort Features:** Air conditioning included. --- ### **Vehicle Condition:** - **Overall:** The vehicle is in good technical condition and fully operational. - **Remarks:** - Aerial Work Platform: Functions properly. - Tire Wear: Less than 50%. - Minor signs of use. This Renault Trafic is a versatile and practical choice for professionals who need a reliable vehicle with an aerial work platform for various applications.

## Accessories

- Bluetooth
- Immobilizer
- Towbar
- Anti-lock braking system
- Air conditioning
- Central locking
- Central lubrication
- Cruise control
- Electrically operated windows
- Low-noise
- Toolbox
- Air horn
- Fog lights
- Radio/cassette player
- Radio/CD player
- Particulate filter
- Spotlights
- Side door
- Catalyst
- Trailer coupling
- Power steering

- Passenger seat
- Airbags
- Radio/Cd/Audio system
- Central doorlocking
- Electric windows
- EBS
- Climate control
- Heater
- ASR (Anti-Slip Regulation/Traction Control)